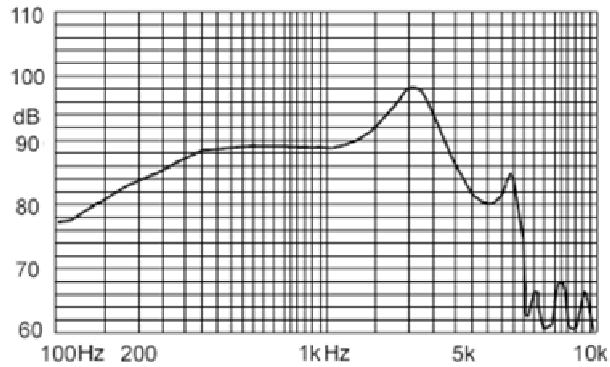


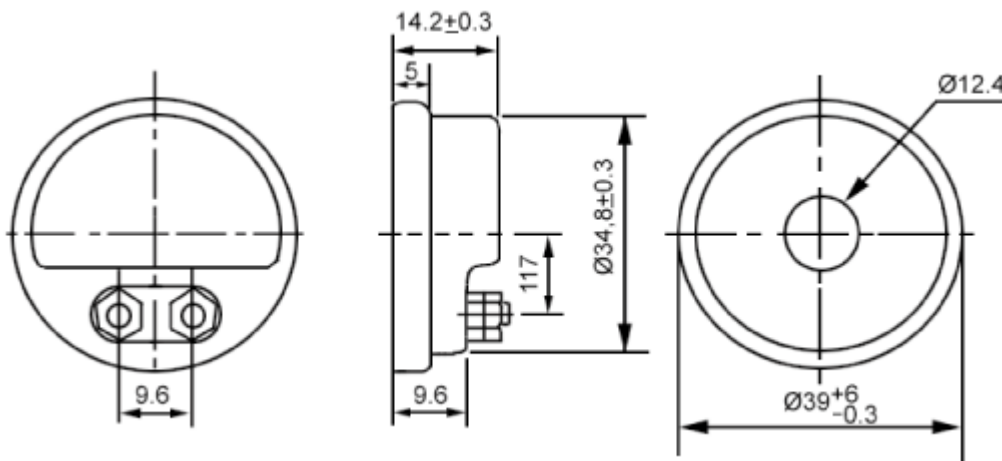
# JIANGSU WUJIN KAILI ELECTRONIC FACTORY

## SPECIFICATION SHEET

ELECTRONIC SPECIFICATION:



Type	KLS-2	
DC Resistance	19Ω±10%	
Impedance (at 1 KHz)	≥70Ω	
Frequency Range	2500Hz±20%	
S.P.L	24Vp-p 1000Hz/1m	≥90dB



### JIANGSU WUJIN KAILI ELECTRONIC FACTORY

Miaoqiao Town, Changzhou city, Jiangsu, China 213167

TEL: 0086-519-86462433; 86712320

FAX: 0086-519-86471336; 86712320

E-mail: [kailiec@jmail.com.cn](mailto:kailiec@jmail.com.cn)

<http://www.kaili-buzzer.com/>